

# NEAFS Newsletter

Volume 42, Issue 1

Spring 2017



# Board of Directors 2017

---

**President: Beth Saucier Goodspeed**

Massachusetts State Police Crime Laboratory  
124 Acton Street  
Maynard, MA 01754  
978-451-3504

[president@neafs.org](mailto:president@neafs.org)

**President-Elect: Melissa Balogh**

NJ State Police Office of Forensic Sciences  
1200 Negron Drive  
Hamilton, NJ 08691

[presidentelect@neafs.org](mailto:presidentelect@neafs.org)

**Treasurer: Maria Tsocanos**

PO Box 135  
Hawthorne, NY 10532

[treasurer@neafs.org](mailto:treasurer@neafs.org)

**Secretary: Tiffany Ribadeneyra**

Nassau County Office of the Medical Examiner  
2251 Hempstead Tpke. Bldg. R  
East Meadow, NY 11554-1856

[secretary@neafs.org](mailto:secretary@neafs.org)

**Director: Sheauling Kastor**

Massachusetts State Police Crime Lab  
124 Acton Street  
Maynard, MA 01754

[director1@neafs.org](mailto:director1@neafs.org)

**Director: Angela Vialotti**

Connecticut Department of Emergency Services and Public  
Protection  
278 Colony Street  
Meriden, CT 06451

[director2@neafs.org](mailto:director2@neafs.org)

**Director: Adam Hall**

[director3@neafs.org](mailto:director3@neafs.org)



# Staff 2017

---

**Past President: Erica Nadeau**

Massachusetts State Police Crime Lab  
190 Carando Drive  
Springfield, MA 01104  
413-205-1847

[pastpresident@neafs.org](mailto:pastpresident@neafs.org)

**Executive Secretary: Matthew Marino**

500 Sea Girt Ave  
Sea Girt, NJ 08750  
845-797-8258

[executivesecretary@neafs.org](mailto:executivesecretary@neafs.org)

**Education Chairperson: John Drawec**

Western New England University  
Department of Physical & Biological Sciences  
1215 Wilbraham Road  
Springfield, MA 01119

[education@neafs.org](mailto:education@neafs.org)

**Registration Chairperson: Jessica Best**

Connecticut Department of Public Safety  
Forensic Science Laboratory  
278 Colony Street  
Meriden, CT 06451

[registration@neafs.org](mailto:registration@neafs.org)

**Membership Chairperson: Alanna Laureano**

NEAFS  
PO Box 135  
Hawthorne, NY 10532

[membership@neafs.org](mailto:membership@neafs.org)

**Merchandise Chairperson:**

[president@neafs.org](mailto:president@neafs.org)

**Site Chairperson: Janine Kishbaugh**

Cedar Crest College  
100 College Drive  
Allentown, PA 18104  
610-606-4661

[sitechair@neafs.org](mailto:sitechair@neafs.org)

**Publications Chairperson: Brandi Clark**

PO Box 135  
Hawthorne, NY 10532

[publications@neafs.org](mailto:publications@neafs.org)

**Awards Chairperson: Elizabeth Duval**

Massachusetts State Police Crime Laboratory  
124 Acton Street  
Maynard, MA 01754  
978- 451-3472

[awards@neafs.org](mailto:awards@neafs.org)

**Ethics Chairperson: Kevin MacLaren**

Westchester County  
Forensic Laboratory  
10 Dana Rd  
Valhalla, NY 10595

[ethics@neafs.org](mailto:ethics@neafs.org)

**Corporate Liaison: Stephanie Minero**

PO Box 248  
Massapequa, NY 11758  
707-70 NEAFS

[exhibits@neafs.org](mailto:exhibits@neafs.org)

**Membership Dues Contact: Susan Flaherty**

NEAFS  
PO Box 135  
Hawthorne, NY 10532

[dues@neafs.org](mailto:dues@neafs.org)

**Certification Chairperson: Peter Diaczuk**

Penn State University  
Forensic Science Program  
University Park, PA

[certification@neafs.org](mailto:certification@neafs.org)

**Webmaster: Lisa McFarland**

US Customs and Border Protection  
New York Laboratory  
1100 Raymond Blvd.  
Newark, NJ 07102

[webmaster@neafs.org](mailto:webmaster@neafs.org)

Gas Chromatograph Mass Spectrometer

# GCMS-TQ8050

*UFMS*  
ULTRA FAST MASS SPECTROMETRY



## Enhanced GC-MS/MS Sensitivity for the Ultimate in Ultra-trace Detection

The new **GCMS-TQ8050** triple quadrupole mass spectrometer has been created based on continuously advancing smart technologies that go beyond what was previously possible. A new highly efficient detector and newly developed technologies enable femtogram-level quantitative analysis, while robust performance ensures dramatically improved reliability.

Learn more about Shimadzu's GCMS-TQ8050.  
Call (800) 477-1227 or visit us online at  
[www.ssi.shimadzu.com/GCMS](http://www.ssi.shimadzu.com/GCMS)

Order consumables and accessories on-line at <http://store.shimadzu.com>  
Shimadzu Scientific Instruments Inc., 7102 Riverwood Dr., Columbia, MD 21046, USA

### Shimadzu's GCMS-TQ8050 provides:

- **Enhanced Sensitivity** – State-of-the-art technologies enable reliable detection of ultra-trace quantities of ions, down to the femtogram level
- **Superior Durability** – New detector with a contamination-resistant ion source and extended service life ensures long-term stable analysis
- **Outstanding Performance** – A new turbomolecular pump with higher evacuation performance achieves a superior vacuum state in the MS unit, resulting in higher sensitivity, accuracy, and stability
- **Reliable Operation** – Smart MRM technology helps accurately create methods for ultra-trace analysis and ensures high sensitivity for MRM measurements



# **MEET THE 2017 BOD**

## **Beth Saucier Goodspeed – President**

Massachusetts State Police Crime Laboratory – Maynard  
Forensic Scientist IV in the Criminalistics and Crime Scene Response Units since June 2001  
Adjunct Instructor in the Graduate Forensic Science program – Bay Path College 2011-2015  
VT Dept. of Health – Forensic Toxicology Chemist for 1 year (2000)  
BS in Forensic Science – University of New Haven  
BS in Chemistry – University of New Haven  
MS in Criminal Justice – Westfield State College

## **Melissa Balogh – President-Elect**

NJ State Police Office of Forensic Sciences, Central Regional Laboratory  
Forensic Scientist II in the trace evidence unit since October 2003  
BS in Criminal Justice - Shippensburg University  
BS in Forensic Chemistry - West Chester University

## **Maria Tsocanos - Treasurer**

Westchester County Forensic Laboratory, NY  
Assistant Forensic Scientist in the Forensic Biology section since 2007  
BS in Forensic Science - John Jay College of Criminal Justice

## **Tiffany Ribadeneyra, F-ABC - Secretary**

Nassau County Office of the Medical Examiner, NY  
Forensic Scientist IV in the Chemistry Section since May 2011  
Westchester County, NY Forensic Laboratory from Dec. 2005 to May 2011  
BS in Chemistry-Fordham University  
MS in Criminal Justice-LIU Post

## **Sheauling Kastor - Director**

Massachusetts State Police Crime Laboratory  
Forensic Scientist II in DNA and Crime Scene Response Units since January 2009  
BS in Biology - Fairfield University  
MS in Forensic Science - University of New Haven

## **Angela Vialotti – Director**

Connecticut Forensic Lab, Connecticut Department of Emergency Services and Public Protection, Division of Scientific Services  
Forensic Science Examiner 1 for approximately 4.5 years  
BS in Biochemistry – Cedar Crest College  
MS in Forensic Science – Cedar Crest College

## **Adam Hall Ph.D., D-ABC – Director**

Director, Mass Spectrometry Facility-Barnett Institute of Chemical and Biological Analysis-Northeastern University, Boston, MA 2014- Present  
Instructor of Forensic Chemistry, Boston University School of Medicine, 2007-2014  
Forensic Chemist II, MA State Police Crime Laboratory, 2002-2007  
BA in Chemistry - Stonehill College  
MS in Chemistry - Northeastern University  
PhD in Analytical Chemistry - Northeastern University

# AGILENT INTUVO GC SYSTEM

Dreaming of a better business outcome for your laboratory? Now Agilent can turn those dreams into reality.

With Intuvo, Agilent has re-invented GC—but you won't have to re-invent your methods. Ferrule-free connections, no-clip columns, a touch-screen interface, smart diagnostics... Intuvo gives you a whole new path to high-quality GC results.

Intelligent, intuitive, innovative.  
Intuvo, from Agilent—the power to Dream Bigger.

Visit [www.agilent.com/chem/intuvo](http://www.agilent.com/chem/intuvo)



# 2017 President's Message



**Northeastern Association  
of  
Forensic Scientists**

Hello!

I would like to start off by saying "Welcome" to all of our new members who were voted in at the Annual Meeting. You are now part of a great organization and I hope all of your years as members will be rewarding. Welcome to a new year to all of our returning members! I know this year will be awesome!!

I am so proud to be writing to this letter to you as your NEAFS President. I never thought I would be saying this when I first joined NEAFS. The past 2 ½ months have been very busy since I took over the role as president. We are working on tasks such as updating forms for consistency, developing position "to do" lists to help future board members complete their responsibilities more easily, setting up the George W. Chin Memorial Scholarship fund and planning both the annual meeting and the Green Mountain DNA Conference, among other things. One of the tasks that I have been working on is gathering historical information for our website so anyone that visits the site can learn about our organization. I have been going through some of the newsletters and program booklets from the early years of NEAFS to gather this information. It gave me the chills when I read the first President's Message from 1976. It is amazing to know that I am now part of this history!! Reading through this information made me realize what an honor it is to serve as President for such a wonderful organization. It will be something that I will cherish and keep close to my heart forever. I hope that this is something that you will all strive to achieve in your role as a forensic scientist in the northeast.

If you are not already a member, please email Alanna Laureano at [membership@neafs.org](mailto:membership@neafs.org) for information. You will not be disappointed! There are so many benefits to joining. Please see the link "Benefits to NEAFS membership" as well as the PowerPoint presentation on the NEAFS homepage at [www.neafs.org](http://www.neafs.org) for more information.

Hopefully you have all received the survey that I emailed out to gather some information from our membership. We would really appreciate your input as it will help us plan future meetings as well as with other tasks. If you have not received your survey, please email me at [president@neafs.org](mailto:president@neafs.org) and I will make sure that you receive it.

Melissa Balogh, our President-elect, is working very hard at preparing the Annual Meeting. Please mark your calendars for November 7-10, 2017 in Pocono Manor, PA at the Kalahari Resort and Conference Center. NEAFS will be offering free registration once again to anyone that presents a technical talk or poster at the annual meeting! Please be sure to take advantage of this benefit and share information that you have learned. Also, the 2018 program chair, Tiffany Ribadeneyra, has also scheduled her



meeting for October 23-27, 2018 at the Sagamore in Bolton Landing, New York. Mark your calendars now and we hope to see you there! Please see our website, [www.neafs.org](http://www.neafs.org) for more details.

The Green Mountain DNA conference is being held at the Sheraton Hotel and Conference Center in Burlington, VT from July 24-26, 2017. Registration will be open on April 4 at 12 PM EST. The conference is expanding to include up to 120 participants for 2017!! Fifteen of those spots will go to NEAFS members! Remember, registration is on a first come, first serve basis. There is a link on the NEAFS website for more information but you can also go to: <http://vfl.vermont.gov/conference>.

Keep in mind that the deadline for the George W. Neighbor, Jr. Scholarship Award and the Carol De Forest Research Fund is April 30<sup>th</sup>. You will also find in this newsletter and on the website the information on the new George W. Chin Memorial Scholarship Award!! The deadline for this award is also April 30<sup>th</sup>. Thank you to the Chin Family for sponsoring this award!

Our next board of directors meeting will be on May 20<sup>th</sup> at the University of New Haven. If you have anything that you would like the board to discuss, please email at [president@neafs.org](mailto:president@neafs.org).

I would like to thank the BOD and staff for all of their hard work and dedication to NEAFS. I simply could not do my job without all of you. I truly appreciate the time and efforts that you make for this organization. You all should be very proud of yourselves!!

Thank you to our members and meeting attendees for supporting our organization and each other. The BOD and staff could not do this without you.

*Beth*

Beth Saucier Goodspeed

2017 NEAFS President





# SELECTRA® U/HPLC Columns

Reproducible, Robust & Selective

**Bringing Our Superior  
Phases to You  
in U/HPLC Format**



**DA** – Unique Polyaromatic Phase  
**C18** – Traditional Reverse Phase  
**Aqueous C18** – Traditional Reverse Phase with Enhanced Selectivity  
**C8** – Less Retentive than Standard C18 Column  
**PFPP** – Operates in Reverse Phase, Normal Phase, or HILIC Mode  
**EtG** – Maximum retention for polar EtG/EtS alcohol metabolites

**Available in 1.8, 3, and 5µm particle sizes**

**800.385.3153** [www.unitedchem.com](http://www.unitedchem.com)



# ABALONASE™ and ABALONASE™+ PURIFIED BETA-GLUCURONIDASE FORMULA CLEAN, RAPID AND RELIABLE

## Abalonase™

Purified Beta-glucuronidase formula that has been designed to quickly hydrolyze conjugated drug metabolites in human samples within minutes.

Part Number	Vol. (mL)	Activity (units)
ASBETA-GLUC-10	10	≥50,000 units/mL
ASBETA-GLUC-25	25	≥50,000 units/mL
ASBETA-GLUC-50	50	≥50,000 units/mL
ASBETA-GLUC-100	100	≥50,000 units/mL

Form: Clear Aqueous Solution / Sulfatase Activity: None /  
Storage: +4°C to +8°C

## Abalonase™ +

Designed for deconjugation of both glucuronidated and sulfated metabolites. The formula is enriched with 4 arylsulfatases making it ideal for the hydrolysis of steroid metabolites.

Part Number	Vol. (mL)	Activity (units)
ASFBETA-GLUC-10	10	≥50,000 units/mL
ASFBETA-GLUC-25	25	≥50,000 units/mL
ASFBETA-GLUC-50	50	≥50,000 units/mL
ASFBETA-GLUC-100	100	≥50,000 units/mL

Form: Clear Aqueous Solution / Sulfatase Activity: > 400 U/mL /  
Storage: +4°C to +8°C



Shown from left to right: Abalonase™ purified Beta-glucuronidase formula, Selectrazyme® and Red Abalone Beta-Glucuronidase enzyme from an alternate supplier.

## Rapid Hydrolysis Buffer included in every order.

Every Abalonase™ and Abalonase™+ purified Beta-glucuronidase formula comes with a Rapid Hydrolysis Buffer to be used at your convenience. Through its usage, both purified Beta-glucuronidase formulas will achieve their maximum performance and it will significantly reduce sample preparation times and use of alternate reagents in addition to minimizing buffer preparation errors.





**UCT, Inc.**  
2731 Bartram Road  
Bristol, PA 19007  
www.unitedchem.com • 800.385.3153

**ango** **Bishop Ranch 6**  
2410 Camino Ramon, Suite 163  
San Ramon, CA 94583

Technology developed by Ango

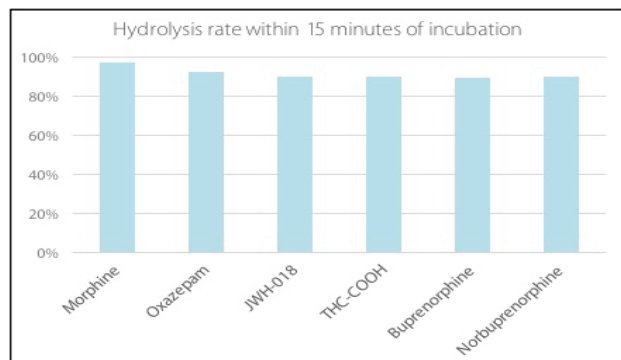
## Hydrolysis Results

This purified beta-glucuronidase provides half the activity units with the same conversion rate as a traditional abalone-derived enzyme. Conversion of Morphine-6-Glucuronide and Codeine-6-Glucuronide, crucial metabolites that are typically difficult to hydrolyze, is achieved in a reasonable time frame without addition of exorbitant amounts of enzyme.

### Morphine-6-Glucuronide and Codeine-6-Glucuronide Conversion Rates(%)

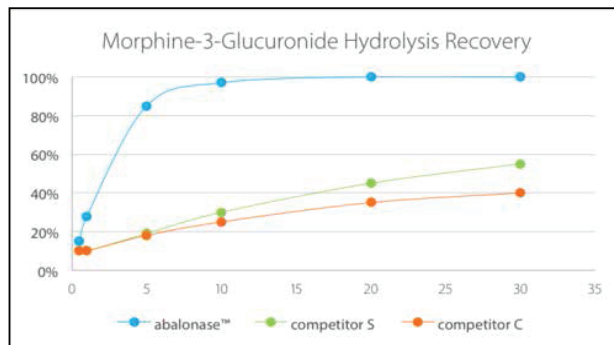
Enzyme Source	Units of Activity		Morphine-6-G		Codeine-6-G	
			Incubation Time		Incubation Time	
			60 min.	90 min.	60 min.	90 min.
<b>Abalonase™</b>	<b>2,500</b>	<b>50 µL</b>	<b>35</b>	<b>41</b>	<b>15</b>	<b>23</b>
	<b>5,000</b>	<b>100 µL</b>	<b>63</b>	<b>81</b>	<b>61</b>	<b>82</b>
<b>Selectrazyme®</b>	<b>5,000</b>	<b>50 µL</b>	<b>27</b>	<b>50</b>	<b>24</b>	<b>36</b>
	<b>10,000</b>	<b>100 µL</b>	<b>44</b>	<b>81</b>	<b>40</b>	<b>65</b>

\*All tests run at 70°C, with the included Rapid Hydrolysis Buffer.



\*All tests run at 65°C, with the included Rapid Hydrolysis Buffer.

Within minutes of application, Abalonase™ can deconjugate the major metabolites of interest including benzodiazepines, opioids, cannabinoids (naturally occurring and synthetic) and steroids.



Abalonase™ can be used for real time and room temperature hydrolysis for high-throughput drug screening applications.



5110-04-02

# Northeastern Association of Forensic Scientists 2017 Annual Meeting



November 7th – 10th, 2017  
Kalahari Resort & Conference Center  
Pocono Manor, PA



*Beautifully appointed, authentic African-themed rooms and suites  
Special conference rate of \$146 per night includes  
admission to waterpark!*

*100,000 sq. ft. indoor waterpark  
Outdoor adventure park open year-round  
Arcade/Mini-bowling/laser tag  
Kalahari Spa  
Many on-site dining options  
Close to outlet shopping*





## **Northeastern Association of Forensic Scientists**

### **2017 Annual Meeting Update**

The snow is falling as I'm writing this message, making it difficult to think about swimming pools and water slides. Unless, of course, they're indoors! This year's meeting will be held November 6<sup>th</sup> -10<sup>th</sup> at the Kalahari Resort and Conference Center in Pocono Manor, PA, home of America's largest indoor waterpark! In addition to a beautiful, state-of-the-art convention center, the Kalahari offers a 100,000 sq. ft. indoor waterpark, 14 restaurants and bars, a spa, a shopping center and a gym. There's also an arcade, a virtual reality gaming arena and an outdoor adventure park, plus a sports center offering seasonal activities like fishing, ice skating and cross-country skiing.

Program planning is in full swing, and the preliminary schedule is in place. Workshops will be held on Tuesday, November 7<sup>th</sup>, with the following confirmed so far: ABC Examination Preparation, Public Speaking, Identification and Analysis of Body Fluid Stains, and a Trace Evidence Workshop focusing on gunshot residue analysis. Several others are also in the works, and more details will be available on the website shortly.

The scientific sessions will be on Wednesday, November 8<sup>th</sup>. Keep an eye out for the call for papers, which will also be available on the website shortly. I'm pleased to once again be able to offer registration reimbursement to any *regular member or active applicant* who presents a technical talk or poster.

The welcome reception, poster session, and evening session will also be held on Wednesday. I'm excited to have Inspector Dave Bowers from the US Postal Inspection Service as the evening session



speaker. Inspector Bowers was one of the lead investigators in the Anthrax investigation that took place after 9/11.

The General and Plenary Sessions are on Thursday, November 9<sup>th</sup>. Detective Timothy Relph will be our General Session Speaker. Detective Relph was a lead investigator in the task force that arrested Dennis Rader, the man better known as the BTK killer, the serial killer who murdered 10 people in and around Wichita, KS between 1974 and 1991. The Plenary Session will focus on the PCAST report and its ramifications on the forensic science community. In between these Thursday sessions, we'll enjoy our annual luncheon.

On Thursday evening we will honor our President, Beth Saucier-Goodspeed (affectionately known as "BSG") at the Annual President's reception. Guys, dig out your Member's Only jackets and ladies dig out your leg warmers and load up on blue eye shadow, because this year the President's reception is 80's-themed and costumes are encouraged! Prizes will be awarded for best costumes, and there may be a few additional surprises as well!

The program concludes on Friday, November 10<sup>th</sup> with the Student Forum and additional scientific sessions (if necessary). The ABC exam will also be offered on Friday. Additional meeting details can be found in the preliminary schedule available in this newsletter and on the NEAFS website as they become available.

If you are interested in helping to make this meeting a success, please contact me at [presidentelect@neafs.org](mailto:presidentelect@neafs.org). I look forward to seeing you all this fall in the Poconos!

Melissa Balogh  
2017 Program Chair

# IMAGINE WHERE YOUR *MASTER'S DEGREE* COULD TAKE YOU.



## M.S. Forensic Science

- One of the foremost forensic science programs in the nation
- Program stresses up-to-date analytical and scientific methods as well as a broad understanding of the concepts underlying the forensic sciences
- Provides students with the theoretical and practical knowledge necessary to apply analytical and scientific methods to criminal investigation

## M.S. Forensic Technology

- Combines traditional crime scene techniques with in depth science and technology
- Students will master various forms of forensic field technology such as portable instrumentation and forensic database usage
- Students can develop specialized knowledge in areas such as bloodstain pattern analysis, firearms evidence, and forensic anthropology

Graduate Enrollment • [gradinfo@newhaven.edu](mailto:gradinfo@newhaven.edu) • 203.932.7440 • [www.newhaven.edu/grad](http://www.newhaven.edu/grad)



University of New Haven



# **Northeastern Association of Forensic Scientists**

## **2017 NEAFS Annual Meeting Preliminary Program Pocono Manor, PA (subject to change)**

### **Monday, November 6th**

3:00 p.m. – 6:30 p.m. Board of Directors Meeting  
6:30 p.m. – 8:30 p.m. Board of Directors Dinner

### **Tuesday, November 7th**

7:30 a.m. – 5:00 p.m. Registration  
7:30 a.m. – 9:00 a.m. Continental Breakfast  
8:00 a.m. – 12:00 p.m. Educator's Forum  
8:00 a.m. – 12:00 p.m. Workshops  
10:30 a.m. – 10:45 a.m. Morning Break  
12:00 p.m. – 1:00 p.m. Lunch  
1:00 p.m. – 5:00 p.m. Workshops  
2:30 p.m. – 2:45 p.m. Afternoon Break  
4:00 p.m. – 8:00 p.m. Exhibitor Setup

### **Wednesday, November 8th**

7:30 a.m. – 5:00 p.m. Registration  
7:30 a.m. – 9:00 a.m. Continental Breakfast  
7:30 a.m. – 7:30 p.m. Exhibits  
8:00 a.m. – 12:00 p.m. Scientific Sessions  
    Criminalistics/Crime Scene  
    Drug Chemistry  
    DNA  
    Toxicology  
    Trace/Arson and Explosives  
10:30 a.m. – 10:45 a.m. Morning Break  
12:00 p.m. – 1:30 p.m. Lunch & Business Meeting  
1:30 p.m. – 5:00 p.m. Scientific Sessions - continued  
3:00 p.m. – 3:15 p.m. Afternoon Break  
5:30 p.m. – 7:00 p.m. Welcome Reception & Poster Session  
8:00 p.m. – 10:00 p.m. Evening Session

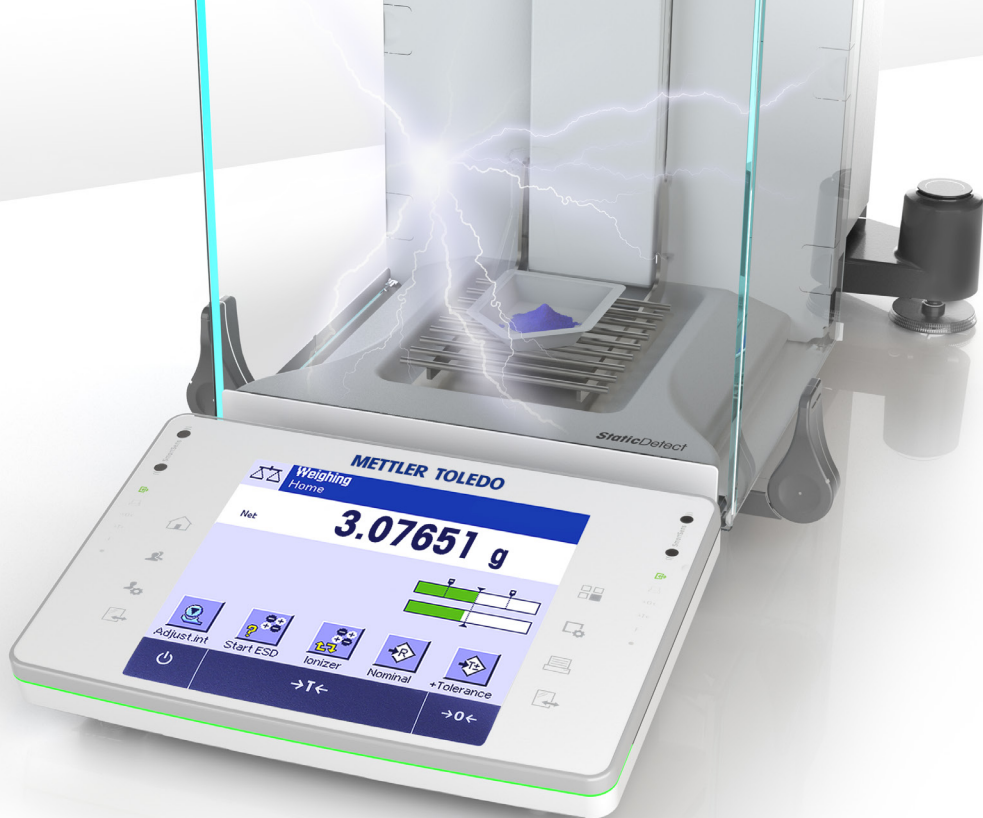


## **Thursday, November 9th**

7:30 a.m. – 5:00 p.m. Registration  
7:30 a.m. – 9:00 a.m. Breakfast  
7:30 a.m. – 12:00 p.m. Exhibits  
8:00 a.m. – 12:00 p.m. General/Plenary Session  
10:30 a.m. – 10:45 a.m. Morning Break  
12:00 p.m. – 2:00 p.m. Annual Luncheon  
2:00 p.m. – 5:00 p.m. General/Plenary Session  
4:00 p.m. – 4:15 p.m. Afternoon Break  
6:00 p.m. – 11:45 p.m. President's Reception

## **Friday, November 10th**

7:30 a.m. – 9:30 a.m. Registration  
7:30 a.m. – 9:00 a.m. Breakfast  
8:00 a.m. – 12:00 p.m. ABC Examination  
9:00 a.m. – 12:30 p.m. Student Forum  
4th Annual NEAFS "Kirk Cup" College Bowl  
9:00 a.m. – 12:30 p.m. Scientific Sessions (if needed)  
10:30 a.m. – 10:45 a.m. Morning Break



# Fact or Friction

## Anti-Static Solutions

Static electricity is a well-known culprit in the lab. Electrostatically charged samples can not only be a frustration, but they can adversely affect weighing accuracy and lead to significant errors.

### Are These Common Situations Fact or Fiction?

- Friction is the most common way electrostatic charges are generated
- The climate conditions of your lab affect your weighing results
- There is no way to dissipate electrostatic charges

Find the answers by visiting [www.mt.com/na-friction](http://www.mt.com/na-friction).

**METTLER TOLEDO**



## *Have You Been Receiving NEAFS Emails?*

*We may not have your most recent email address*

*Providing NEAFS with the most up to date email address helps us get important membership information to you including:*

*Professional Training Opportunities*

*Annual Meetings*

*Dues Payments*

*You can also let us know if other information should be updated, especially if you have a new professional affiliation or have had a name change.*

*Please send an email to*

*Alanna Laureano, Membership Chair at [membership@neafs.org](mailto:membership@neafs.org)*

*Or Susan Flaherty, Dues Contact at [dues@neafs.org](mailto:dues@neafs.org)*

*And let us know what should be updated*



## **NEAFS would like to Welcome the following New Members**

---

Arcadia University  
Erica N. Johnson  
Courtney L. Mower

Bay Path University  
Madison L. Nassif  
Miranda Lisa French  
Amanda G. Araujo

Burlington Labs  
Sara M. Ritter

Cedar Crest College  
Kaitlyn E. Hess  
Jozlyn C. Gibbs

John Jay College of Criminal  
Justice  
Richard J. Passanisi

Massachusetts State Police Crime  
Laboratory  
Laurie L. Murphy  
Monique A. Oles  
John D. Biello

Nassau County Medical Examiner  
Division of Forensic Sciences  
Sarah R. Isasi  
Jackie S. Quito  
Diana S. Baires

NYC Health and Hospitals  
Deadra A. Caleb

New York City OCME  
Lindsay A. Catlin  
Christina R. Sorensen

NYPD Police Laboratory  
Brandy A. Mora

New York State Division of  
Criminal Justice Services  
Shelley M. Palmer

NMS Labs  
Tamar V. Daniels

Pace University  
Nidhi C. Sheth

Suffolk County Crime Laboratory  
Joseph A. Guttieri

SUNY Research Foundation  
Claire K. Muro

University of Albany, SUNY  
Kyle C. Doty

Vermont Forensic Laboratory  
Jeffery S. Dukette  
David J. Patlak


Weill Cornell Medical College  
Tatiana S. Batson

Westchester County Forensic  
Laboratory  
Amanda C. White

Laura Cannon

# RANDOX TOXICOLOGY

## evidence MULTISTAT

 Radox Tox



## Drug testing has changed forever

Using our revolutionary Biochip Array Technology, the automated Evidence MultiSTAT simultaneously screens from a multi-analyte testing platform allowing toxicologists to achieve a complete immunoassay profile from the initial screening phase.

### Reliable Results

Consistently delivers accurate results and offers a highly sensitive way to detect drugs of abuse in under 20 minutes

### Speed

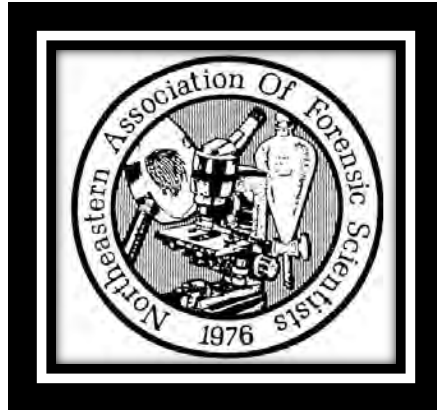
Screens up to 63 tests per hour providing rapid and accurate drug-detection from a single sample.

### Extensive Test Menu

Detection of up to 21 drugs, covering multiple drug classes including classical, prescription and synthetic drugs of abuse.

### Multiple Matrices

Designed to work across a variety of matrices including urine, blood and oral fluid.



## ATTENTION STUDENTS:

Are you a current full-time undergraduate student in your junior or senior year, or are you either a part-time or full-time graduate student completing his or her degree in a forensic program at a regionally accredited institution located in the Northeastern U.S. (Connecticut, Rhode Island, Massachusetts, New Hampshire, Vermont, Maine, New Jersey, New York, and Pennsylvania)?

### **Then you are eligible to apply for:**

George W. Neighbor Jr. Memorial Scholarship (undergraduate) - Award is \$1750

George W. Neighbor Jr. Memorial Scholarship (graduate) - Award is \$1750

Carol De Forest Forensic Science Research Grants - Award is \$2500

**\*Note** – eligibility is for both full-time undergraduate and graduate students

**\*\* Note** – Two Research Grants will be Awarded.

All submission materials for either the scholarship or the research grant must be completed, and electronically submitted by **April 30, 2017. The 2017 Awards recipients will be notified no later than September 1, 2017.**

For more information and Scholarship/Research Grant forms please go to <http://www.neafs.org/>

Questions or comments? Please email [Awards@NEAFS.org](mailto:Awards@NEAFS.org)



# THE GEORGE W. CHIN MEMORIAL SCHOLARSHIP

## NEAFS and the Chin Family



On September 22, 2016, NEAFS lost one of the pioneers of the Association. George had a passion for forensic science and as a self-appointed “God of Trace Evidence”, he liked to share his knowledge and mentor the younger generation. George was one of the co-founders of the Student Forum at NEAFS, where he would teach students about the realities of a job in forensic science. In addition to NEAFS, he was also a life member of the New Jersey Association of Forensic Scientists (NJAFS), a charter member of the American Society of Trace Evidence Examiners (ASTEE), and a member of the American Academy of Forensic Sciences (AAFS) and the New Jersey Homicide Investigators Association (NJHIA).

A graduate of John Jay College of Criminal Justice – City University of New York (CUNY), his professional career spanned 36 years with the New Jersey State Police. When George first started in March of 1980, he was briefly assigned to the Equine Laboratory at the Meadowlands, but quickly transitioned to a position at the North Regional Laboratory, where he was able to grow his love for all things Trace Evidence. George loved his work and helped to educate students about our field. He would routinely take his own time to go and lecture to high schools and attend their career fairs. In addition, George has mentored numerous interns over the course of his career, many of whom have him to thank for their current employment!

George’s graciousness was felt by all who came into contact with him and his passing leaves a huge void in the forensic community and in our hearts.

George’s family has graciously set up this Memorial Scholarship fund in his memory and honor.

# THE GEORGE W. CHIN MEMORIAL SCHOLARSHIP

Eligibility requirements for the George W. Chin Memorial Scholarship:

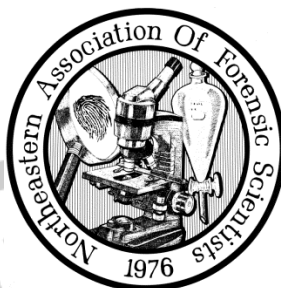
- Currently enrolled in a Forensic Science program
- Full-time undergraduate students in their junior or senior year
- Full or part-time graduate students (limited to first two years for PhD students)
- The student must demonstrate excellence in his/her academic program.

Application requirements:

- Two letters of recommendation (each accompanied with the recommendation form) from Professors involved in the Forensic Science curriculum.
- A letter from the student describing his/her personal aspirations in the Forensics field, achievements and reasons for award consideration. (Minimum of 250 words - maximum of 500 words). This must be provided to the Professors submitting the recommendation letters.
- Applicants should be attending college/university within the area from which the Northeastern Association of Forensic Scientists draws its members (Maine, New Hampshire, Vermont, Rhode Island, Massachusetts, New York, Connecticut, New Jersey, and Pennsylvania).
- Most current academic transcripts.
- Application requirements must be emailed by **April 30<sup>th</sup>**. Out of fairness to all potential candidates, no exceptions will be made.

Interested candidates should submit the above requirements electronically in a single PDF titled (GWC\_Last name\_First name\_Grad) OR (GWC\_Last name\_First name\_Undergrad) to [awards@neafs.org](mailto:awards@neafs.org)

# THE GEORGE W. CHIN MEMORIAL SCHOLARSHIP



Are you a current full-time undergraduate student in your junior or senior year, or are you either a part-time or full-time graduate student or in your first two years of your Ph.D. Forensic Science program? Do you attend a college or university within the area from which NEAFS draws its members (CT, NY, NJ, PA, VT, NH, ME, RI, MA)? Do you demonstrate excellence in your academic program?

If Yes, you are eligible to apply for the George W. Chin Memorial Scholarship!

The award is \$2000.00 as well as Associate membership for one year in the NEAFS organization. Membership will be granted to a current member or active applicant as well as a non-member (the application fee will also be included).

All submission materials for the Memorial Scholarship must be completed and electronically submitted by April 30. The award recipients will be notified no later than September 1.

For more information and to obtain the application forms, go to <http://www.neafs.org>

If you have any questions please email: [awards@neafs.org](mailto:awards@neafs.org)

**Northeastern Association of Forensic Scientists**

**George W. Chin Memorial Scholarship**

**Application Form**

Undergraduate ☐ Graduate ☐ Ph.D. (1<sup>st</sup> 2 years) ☐ (select one)

Name \_\_\_\_\_ Email \_\_\_\_\_

School Residence \_\_\_\_\_ School Phone Number \_\_\_\_\_

Home Address \_\_\_\_\_ Home Phone Number \_\_\_\_\_

College/Institution \_\_\_\_\_ Current Year \_\_\_\_\_

Personal aspirations in the Forensics field, achievements and reasons for award consideration –

Minimum of 250 words and a maximum of 500 words

(Please use the space below and/or attach additional sheets, if necessary)

All applicants must submit the following materials electronically in one pdf file to [awards@neafs.org](mailto:awards@neafs.org): 1) Candidate application; 2) Two recommendation forms from Professors in the Forensic Science curriculum and corresponding letters; 3) Most current academic transcripts.

All materials must be submitted and received no later than **April 30<sup>th</sup>**. The winner will be notified no later than September 1<sup>st</sup>.

NEAFS does not discriminate against any applicant because of race, color, religion, sex, national origin, or physical handicap.

OFFICIAL USE ONLY: Reference# \_\_\_\_\_ Date Received \_\_\_\_\_ Initials \_\_\_\_\_



## Northeastern Association of Forensic Scientists

### George W. Chin Memorial Scholarship

#### Recommendation Form

Undergraduate\_\_\_ Graduate\_\_\_ Ph.D. (1<sup>st</sup> 2 years)\_\_\_(select one)

Candidate's Name\_\_\_\_\_ Date\_\_\_\_\_

Professor's Name\_\_\_\_\_ Signature\_\_\_\_\_

Title\_\_\_\_\_ College/Institution\_\_\_\_\_

Address\_\_\_\_\_

Phone Number\_\_\_\_\_ Affiliation with Candidate\_\_\_\_\_

Please check the appropriate code: O=Outstanding E=Excellent G=Good A=Average BA=Below Average NI=No Information

	O	E	G	A	BA	NI
Knowledge of subject matter	<input type="checkbox"/>	<input type="checkbox"/>	<input type="checkbox"/>	<input type="checkbox"/>	<input type="checkbox"/>	<input type="checkbox"/>
Ability to work with others	<input type="checkbox"/>	<input type="checkbox"/>	<input type="checkbox"/>	<input type="checkbox"/>	<input type="checkbox"/>	<input type="checkbox"/>
Communication skills	<input type="checkbox"/>	<input type="checkbox"/>	<input type="checkbox"/>	<input type="checkbox"/>	<input type="checkbox"/>	<input type="checkbox"/>
Leadership	<input type="checkbox"/>	<input type="checkbox"/>	<input type="checkbox"/>	<input type="checkbox"/>	<input type="checkbox"/>	<input type="checkbox"/>
Reliability	<input type="checkbox"/>	<input type="checkbox"/>	<input type="checkbox"/>	<input type="checkbox"/>	<input type="checkbox"/>	<input type="checkbox"/>
Initiative	<input type="checkbox"/>	<input type="checkbox"/>	<input type="checkbox"/>	<input type="checkbox"/>	<input type="checkbox"/>	<input type="checkbox"/>
Maturity	<input type="checkbox"/>	<input type="checkbox"/>	<input type="checkbox"/>	<input type="checkbox"/>	<input type="checkbox"/>	<input type="checkbox"/>
Integrity	<input type="checkbox"/>	<input type="checkbox"/>	<input type="checkbox"/>	<input type="checkbox"/>	<input type="checkbox"/>	<input type="checkbox"/>
Attitude	<input type="checkbox"/>	<input type="checkbox"/>	<input type="checkbox"/>	<input type="checkbox"/>	<input type="checkbox"/>	<input type="checkbox"/>

Please feel free to give us any additional comments you feel may be helpful to us. (Attach additional sheets, if necessary.)

I have read the candidate's letter and find it to be true and accurate to the best of my knowledge. ☐ Agree ☐ Disagree

All applicants must submit the following materials electronically in one pdf file to [awards@neafs.org](mailto:awards@neafs.org): 1) Candidate application;  
2) Two recommendation forms from Professors in the Forensic Science curriculum and corresponding letters; 3) Most current academic transcripts.

All materials must be submitted and received no later than **April 30<sup>th</sup>**.

NEAFS does not discriminate against any applicant because of race, color, religion, sex, national origin, or physical handicap.

OFFICIAL USE ONLY: Reference#\_\_\_\_\_ Date Received\_\_\_\_\_ Initials\_\_\_\_\_

## **NEAFS needs your HELP to fill in the blanks!**

**Are you an award winner or know someone who was? If so, please contact Elizabeth Duval at [awards@neafs.org](mailto:awards@neafs.org) with any additional information.**

### **NEAFS Awards Winners**

---

#### **2016**

George W. Neighbor Jr. Memorial Scholarship Undergraduate – Olivia Goodwin  
George W. Neighbor, Jr. Memorial Scholarship Graduate – Courtney Mower  
Carol De Forest Research Grant – Chandler Grant and Elena Zavala  
Meritorious Service Award – George W. Chin

#### **2015**

George W. Neighbor, Jr. Memorial Scholarship Graduate - Kaitlyn Hess  
George W. Neighbor Jr. Memorial Scholarship Graduate – Erica Johnson  
Carol De Forest Research Grant – Ashton Lesiak  
Meritorious Service Award – David San Pietro

#### **2014**

George W. Neighbor, Jr. Memorial Scholarship Undergraduate - Angelica Graver  
George W. Neighbor Jr. Memorial Scholarship Graduate - Heidi Campbell  
Carol De Forest Research Grant - Emily Meyers  
Meritorious Service Award – Peter Diaczuk

#### **2013**

George W. Neighbor, Jr. Memorial Scholarship Undergraduate - Emily Fuller  
George W. Neighbor, Jr. Memorial Scholarship Graduate - Ashton Lesiak  
Carol De Forest Research Grant - Rachel Bower  
Meritorious Service Award – Vincent Desiderio

#### **2012**

George W. Neighbor, Jr. Memorial Scholarship Undergraduate – Kaitlin Hafer  
George W. Neighbor, Jr. Memorial Scholarship Graduate - Daniel Hall  
1st Carol De Forest Research Grant – Joseph Iacona  
1st Meritorious Service Award – Ted Schwartz

#### **2011**

George W. Neighbor, Jr. Memorial Scholarship Undergraduate – Elizabeth Sunderhaus  
George W. Neighbor, Jr. Memorial Scholarship Graduate - Kristen Johnson

#### **2010**

George W. Neighbor, Jr. Memorial Scholarship Undergraduate – Jennifer Bonetti  
George W. Neighbor, Jr. Memorial Scholarship Graduate - Loretta Kuo

#### **2009**

George W. Neighbor, Jr. Memorial Scholarship Undergraduate – Michelle Schmidt  
George W. Neighbor, Jr. Memorial Scholarship Graduate –                     

## **2008**

George W. Neighbor, Jr. Memorial Scholarship Undergraduate – Stacie Kaufman  
George W. Neighbor, Jr. Memorial Scholarship Graduate -                     

## **2007**

George W. Neighbor, Jr. Memorial Scholarship Undergraduate – Christina Mulligan  
George W. Neighbor, Jr. Memorial Scholarship Graduate -                     

## **2006**

George W. Neighbor, Jr. Memorial Scholarship Undergraduate – Kathryn O'Brien  
George W. Neighbor, Jr. Memorial Scholarship Graduate - Joel Stepanchick

## **2005**

George W. Neighbor, Jr. Undergraduate – April McNearney  
George W. Neighbor, Jr. Graduate - Evan Bernier

## **2004**

George W. Neighbor, Jr. Memorial Scholarship Undergraduate – Meghan Miller  
George W. Neighbor, Jr. Memorial Scholarship Graduate - Deborah Lark

## **2003**

George W. Neighbor, Jr. Memorial Scholarship Undergraduate – Annette Lopez  
George W. Neighbor, Jr. Memorial Scholarship Graduate – Kelley Corcoran

## **2002**

George W. Neighbor, Jr. Memorial Scholarship Undergraduate – John Kristofic  
George W. Neighbor, Jr. Memorial Scholarship Graduate - Marc LaFrance

## **2001**

George W. Neighbor, Jr. Memorial Scholarship – Allison Curran

## **2000**

George W. Neighbor, Jr. Memorial Scholarship Graduate – Linda Chiu Rourke

## **1999**

George W. Neighbor, Jr. Memorial Scholarship – Kimberbely A. Parker  
George W. Neighbor, Jr. Memorial Scholarship – Vincent J. Desiderio

## **1998**

George W. Neighbor, Jr. Memorial Scholarship – Lisa Malachowski  
George W. Neighbor, Jr. Memorial Scholarship – Brandy Blackburn

## **1997- Awards changed to be called George W. Neighbor, Jr. Scholarship**

No awards were given out as all applications received were incomplete.

1989 and 1990 No award given out.



The New Home of ASCLD/LAB

# COMMITTED · CONNECTED · FOCUSED

Since 1982 it has been our mission to develop and evolve **forensic science accreditation** standards to meet the needs of **our customers** and **yours**.



Quality Matters®

**ASCLD/LAB** offers a wide range of classroom and web-based training and education programs developed specifically for the **forensic community**.

- Preparation Course
- Internal Auditor Training
- Assessor Course
- Measurement Confidence 100 Series
- Root Cause Analysis

For more information on accreditation requirements, training courses or the accreditation process visit us online at:

***asclcd-lab.org***

PROCESSES ✓ EQUIPMENT ✓ PERSONNEL ✓ STANDARDS ✓ ENVIRONMENT ✓



# Green ountain DNA Conference

The 2017 Green Mountain DNA Conference will be held at the Sheraton Hotel & Conference Center in Burlington, Vermont from July 24-26. Conference registration will begin on April 4, 2017 at noon EST. The conference has limited seating and you are encouraged to register at noon as previous conferences have sold out within 10-15 minutes after registration was opened. This year the number of attendees has been expanded to 120. To encourage a wide variety of representation, the maximum number of attendees from a single laboratory/agency/corporation is three.

To learn more about the conference and this year's agenda, or to register for the conference please visit the Conference web page:  
<http://vfl.vermont.gov/conference>

Registration is \$300 and includes meeting materials, breakfasts, lunches and breaks for the entire conference, a vendor reception with light fare and drinks on Monday night and a “meet the speakers” dinner cruise on Lake Champlain for Tuesday night.

The Conference has obtained a block of rooms at the Sheraton at the government rate of \$125 (plus 10% tax). The link for room registration will be posted on the conference website once available.

The conference ends at noon on Wednesday, July 26<sup>th</sup> and will be followed by a lunch and afternoon session sponsored by Promega. Registration for this session is free and the website to register will be provided on the Conference website and to those attending the conference at a later date.

# Fast Investigation

Real-time Analysis - High Throughput Imaging

Hair, fibers, ink, tapes

Powders, explosives, residues

Accident reconstruction

Trace evidence

Plant materials, drugs

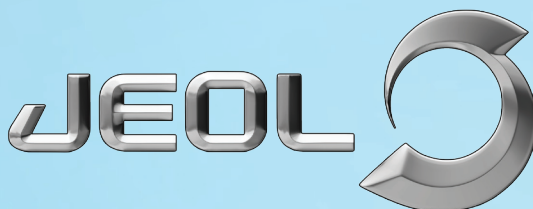
Gunshot residue

**Versatile High Resolution Scanning Electron Microscopes**  
**Direct Analysis High Resolution Mass Spectrometer**

**Preserve the evidence**

- ▶ Large sample chamber for SEM
- ▶ Direct analysis with Mass Spec

[www.jeolusa.com/forensics](http://www.jeolusa.com/forensics)





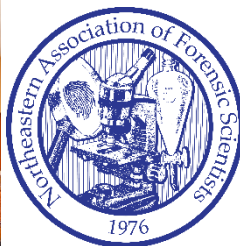
# Northeastern Association of Forensic Scientists



## 2018 Annual Meeting

THE  
SAGAMORE  
RESORT  
ON LAKE GEORGE • BOLTON LANDING, NEW YORK

October 23, 2018 – October 27, 2018

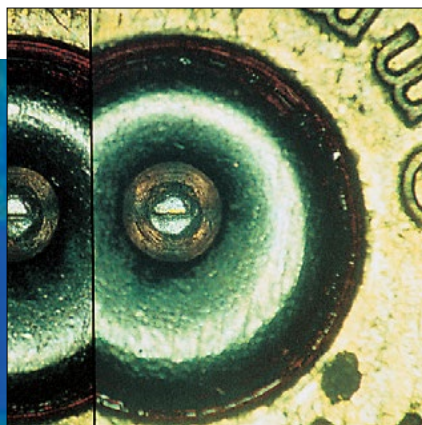
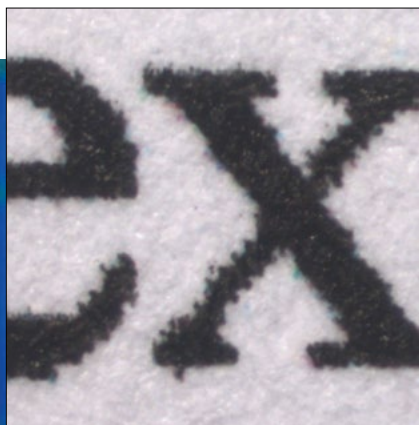


From Eye to Insight



## TRADE IN AND TRADE UP FOR CONFIDENCE IN YOUR CASEWORK

Save \$10,000 When You Trade In **Any** Comparison Microscope System\*



For more than 100 years, Leica Microsystems has offered you confidence in your casework through premium solutions for forensic imaging, firearms examination and trace evidence analysis.

Our forensic comparison systems feature telecentric optics to ensure the confident measurement, observation accuracy and magnification fidelity that optical zoom based systems simply cannot provide - giving you **reproducible quality and accuracy for results you can stand behind.**

**Save \$10,000 when you trade in ANY  
comparison microscope system in ANY condition!\***

**Click or copy the link below for more information.**

**[www.leica-microsystems.com/forensic-trade](http://www.leica-microsystems.com/forensic-trade)**





## **NEAFS Visiting Scientist Program**

Any private or public forensic science laboratory in the NEAFS geographical area needing technical, scientific, or training assistance may apply to the NEAFS Visiting Scientist Program.

Upon request, NEAFS will make a good faith effort to find a qualified individual(s) to come to the laboratory and provide the assistance. The person(s) selected will be agreed upon between NEAFS and the laboratory. NEAFS will subsidize the visit which can be up to 5 working days in duration. Travel logistics will be arranged by the laboratory in conjunction with both the visiting scientist and NEAFS.

Interested laboratories can simply complete the attached application and email it to the NEAFS Education Chairperson at [education@neafs.org](mailto:education@neafs.org). The Education Chair will contact the person designated on the form within 10 business days of receiving the application.

The number of quality hours for those claiming continuing education credit as a result of the training will be determined by the instructor(s).

# NEAFS Visiting Scientist Request Form

**Laboratory:**\_\_\_\_\_

**Laboratory Director/Manager:**\_\_\_\_\_

**Address:**\_\_\_\_\_

\_\_\_\_\_

**Contact:**\_\_\_\_\_

Phone:\_\_\_\_\_

Email:\_\_\_\_\_

**Request (Be Specific):**

---

---

---

---

---

---

---

---

---

---

**Do you have a particular individual(s) who you wish to be the visiting scientist?**

\_\_\_\_\_

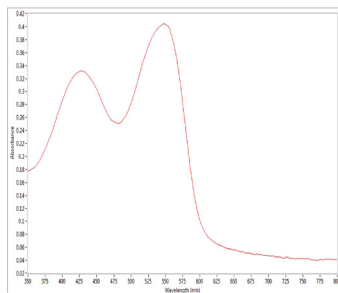
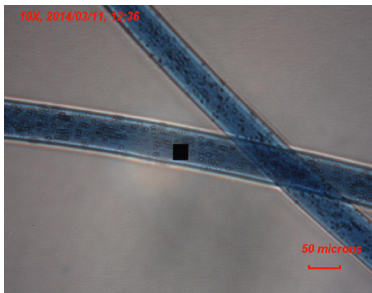
**Approximate desired date(s) of visit:**\_\_\_\_\_

**Number of individuals attending the training:**\_\_\_\_\_

# CRAIC

## TECHNOLOGIES

# YOUR SOLUTION FOR TRACE EVIDENCE



CRAIC Technologies is your one-stop solution for trace evidence, glass refractive index, Raman spectroscopy, drugs and explosives analysis, and polarization analysis from the deep UV to NIR. Our instruments also have wavelength and photometric calibration standards traceable to NIST and is proudly Made in America.

- UV-visible-NIR Microspectroscopy
- Glass Color Spectra
- UV-visible-NIR Fluorescence Spectra
- UV-visible-NIR Microspectroscopy
- Raman Microspectroscopy
- UV-visible-NIR Fluorescence Imaging
- UV-visible-NIR Polarization
- UV-visible-NIR Polarization Imaging
- Glass Refractive Index

**For more information, call  
877.UV.CRAIC  
or visit our website at  
[www.microspectra.com](http://www.microspectra.com)**

©2014 CRAIC Technologies, Inc. San Dimas,  
California (USA).

## NEAFS Merchandise Chair NOW available

If you or someone you know is interested in becoming involved with the NEAFS organization – here is a great opportunity! The position of Merchandise Chair is now vacant and we would like it filled as soon as possible. The role of the Merchandise Chair is responsible for overseeing the sales and distribution of NEAFS merchandise as well as providing reports on the merchandise sales to the BOD as needed. An additional role is also to set up a booth for sales at the Annual Meeting.

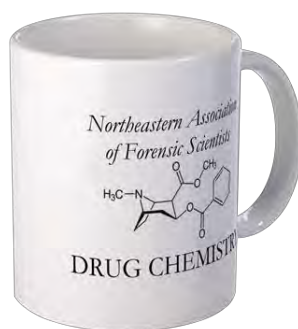
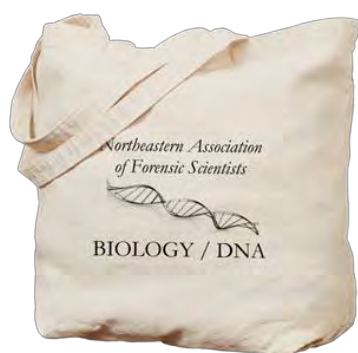
If you are interested, please contact:

Beth Saucier Goodspeed, NEAFS President, at [president@neafs.org](mailto:president@neafs.org)



# The NEAFS Merchandise Shops

at  
[cafepress.com/NEAFS](http://cafepress.com/NEAFS)  
&  
[NEAFS.qbstores.com](http://NEAFS.qbstores.com)



**All income generated funds the  
Carol DeForest Forensic Science Research Grant.**

# foster+freeman

Improving the Quality  
of Forensic Evidence

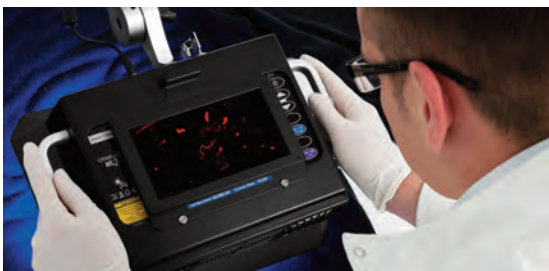


## Increase the speed and efficiency of forensic DNA processing

### Rapid detection of body fluids

The **Crime-lite®ML2** combines multi-wavelength LED illumination with wide-area magnification, to provide the ideal benchtop examination tool.

The **Crime-lite®ML2** is available with White, UV, Violet, Blue, Cyan, Green, Orange, Red & IR LEDs.



### Fast Analysis of DNA samples

**ParaDNA®** is a compact evidence analysis system that quickly determines whether or not DNA is present in a sample.

Taking just 75 minutes to analyse crime scene samples, **ParaDNA®** can save time & reduce costs.



**Innovative Products** that dramatically reduce the time required to process samples returned to the laboratory for examination.



# NORTHEASTERN ASSOCIATION OF FORENSIC SCIENTISTS

## 2017 TRAINING SCHOLARSHIP FUND

OPEN APPLICATION PERIOD: JANUARY 1<sup>ST</sup>, 2017 – DECEMBER 31<sup>ST</sup>, 2017

### APPLICATION REQUIREMENTS

The Northeastern Association of Forensic Scientists (NEAFS) is proud to offer its members a Training Scholarship Fund (TSF). Regular Members, in good standing, are eligible to receive up to \$200 towards training, workshop or non-NEAFS meeting registration and travel expenses. Individuals will only be allowed reimbursement once per application period. Any NEAFS Annual Meeting expenses are ineligible to receive funding. Reimbursement will occur upon receipt of a certificate showing successful attendance and completion of the course along with an article summarizing the course for the NEAFS newsletter.

### APPLICATION INSTRUCTIONS

Applicants must submit a *Pre-Approval Application* prior to attending the training for which they wish to obtain funding. All applications must be complete with a brief course description, statement as to how the applicant will benefit from attending the training and justification for receiving funding (i.e. insufficient employer funding or continuing education requirements).

Notification will be given to each applicant upon receipt of the *Pre-Approval Application*. This notification lets the applicant know that their submission has been received by NEAFS and is being reviewed by the Board. In no way shall this notification serve as approval to receive reimbursement or that the applicant will receive any Training Scholarship Funds. Please allow several weeks for the Board to thoroughly review each application. Applicants can expect to be informed of the acceptance or rejection of their application within 60 days of receiving this *Pre-Approval Application* notification.

Upon successful attendance and completion of the training, all pre-approved applicants must submit a *Reimbursement Application* along with supporting documentation. Whenever possible, a certificate should be provided as proof of attendance and completion. If a certificate is not issued or is unavailable, a letter from the organizer/instructor verifying the applicant's successful attendance and completion shall suffice. Each Training Scholarship Fund recipient is required to contribute to NEAFS and its members by publishing a written article in the Newsletter. *Reimbursement Applications* will only be considered complete when accompanied by a 1000-word (minimum) course summary.

Please submit all inquiries, applications and supporting documentation to: [awards@neafs.org](mailto:awards@neafs.org).

## 2017 Training Scholarship Fund

---

The Northeastern Association of Forensic Scientists (NEAFS) is proud to offer its members a 2017 Training Scholarship Fund. Regular members, in good standing, are eligible to receive up to \$200 towards training, workshop or non-NEAFS meeting registration expenses. Detailed instructions and application forms are available on the NEAFS website. Simply click the "Training" link at the top of the screen and scroll down to the "NEAFS Training Scholarship Forms". The current application period is January 1st, 2017 to December 31st, 2017. Reimbursements will be issued on a first come, first serve basis and funding is limited. If you plan to attend a non-NEAFS meeting workshop, training or course during this application period and will not be funded by your agency or any other non-NEAFS related entity, we highly encourage your swift application for the 2017 Training Scholarship Fund. Please visit the NEAFS [training](#) website to take advantage of this great NEAFS opportunity and to view upcoming training opportunities!

## Upcoming Training

---

**April 2017**

---

**Houston Forensic Science Center, Houston, Texas**

**Forensic Anthropology - Skeletal Recovery**

**April 3 - 7, 2017**

Contact: Jordan Benton, Telephone: 713-929-6769 or

Email: [registration@houstonforensicscience.org](mailto:registration@houstonforensicscience.org)

Website: <http://houstonforensicscience.org/training.php>

---

**Houston Forensic Science Center, Houston, Texas**

**Intermediate Latent Print Comparison**

**April 17-21, 2017**

Contact: Jordan Benton, Telephone: 713-929-6769 or

Email: [registration@houstonforensicscience.org](mailto:registration@houstonforensicscience.org)

Website: <http://houstonforensicscience.org/training.php>

---






Advanced Tools for the Forensic Biology  
and  
Human Identification Industry

eDNA remains relevant as it continually evolves to compliment the latest technologies and methods...when you are ready  
**we are there!**

### **eDNA's *Bullet***



The eDNA **Probabilistic Genotyping** tool has been designated ***Bullet*** for its speed, accuracy and ability to cut through the fog of uncertainty.

The "Understandable" Continuous Model

Bullet's PG model is based on the "exact method" — which calculates results in seconds, not hours or days. Bullet's fully disclosed algorithms render controversial "Black-box" solutions unnecessary.

With stunning ease (like all eDNA tools) construct, calculate, and document any kinship scenario imaginable.

Brutus is an indispensable tool for use in familial identification of "human remains" and missing person cases.

### **eDNA's *Brutus***



When a new laboratory joins the eDNA Consortium they become eligible to take full advantage of the robust eDNA LIMS and all of the tightly integrated statistical calculation tools.

To learn more or to request a live demo please visit [www.eDNALIMS.com](http://www.eDNALIMS.com)

Lifetime Free Updates

## Certification Reimbursement

---

The NEAFS Board of Directors has voted to reimburse the American Board of Criminalistics and International Association for Identification exam sitting fees for five NEAFS members (regular or associate) in good standing who pass the ABC or IAI exam. This offer is for any exam completed in 2017. There will be an ABC exam offered at the NEAFS Annual meeting. After passing the examination, please fill out the Certification Reimbursement Form ([www.neafs.org](http://www.neafs.org)) and email the completed form with proof of passing the exam to the NEAFS Certification Chair Peter Diaczuk at [certification@neafs.org](mailto:certification@neafs.org). The reimbursement is based on a first come first served basis. Remember you must pass the ABC or IAI exam to be considered for reimbursement.

## Important Notice

---

The AAFS Board of Directors decided to discontinue the Journal of Forensic Sciences subscriptions for the affiliate groups at the end of 2016. Should members wish to continue subscribing, they may do so directly through the publisher.

## Missing Something

---

Be sure to check the NEAFS website for the latest **Job Opportunities**.

**B.O.D. Meeting Minutes and Financial Statements** will now be placed in the Member Area of the NEAFS website. If you have trouble logging in please contact the web master, [webmaster@neafs.org](mailto:webmaster@neafs.org).

**\*DON'T FORGET TO LIKE US ON FACEBOOK\***